

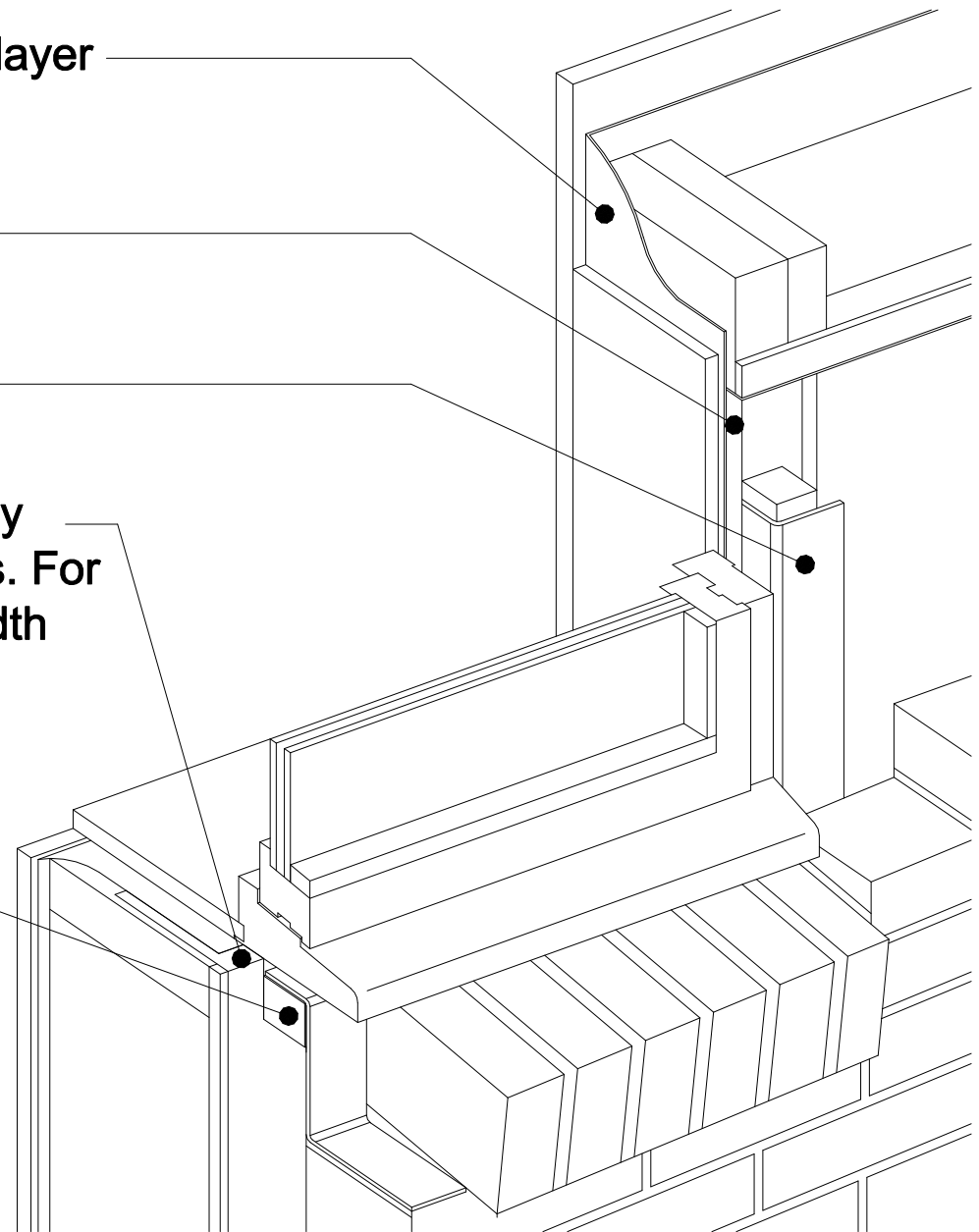
Turn Wallint<sup>®</sup> 50/solar air barrier/vapour control layer  
into reveals

Permo<sup>®</sup> frame turned into openings

Cavity closer with flashing

Permo<sup>®</sup> frame turned into openings and lapped by  
Wallint<sup>®</sup> 50/solar air barrier/vapour control layers. For  
sealing laps, use Permo<sup>®</sup> TR adhesive tape (width  
60mm) and sealed to wall using<sup>®</sup> Pasto sealant

Cavity closer with flashing



KLOBER  
TYPICAL PERMO<sup>®</sup> FRAME INSTALLATION DETAIL  
DRG No. KL006